

A photograph of a light-colored dog, possibly a Weimaraner, sitting on a grassy field. The dog is looking towards the left. In the background, the lower legs and feet of a person wearing blue jeans and white sneakers with black and red accents are visible. The text 'THE DOGS' is overlaid in the center of the image.

THE DOGS

Por: Lucca Bergel e Felipe de Pina



The Labrador Retriever is a dog from Great Britain . It is considered the most popular kind of dog in the North America

and in Europe .

In the 1950s, he was used as a farm worker but they started using him as a company dog .

Its a big kind of dog , he can be 62 cm and he can be 36 kg.He is a friendly dog , he loves to play

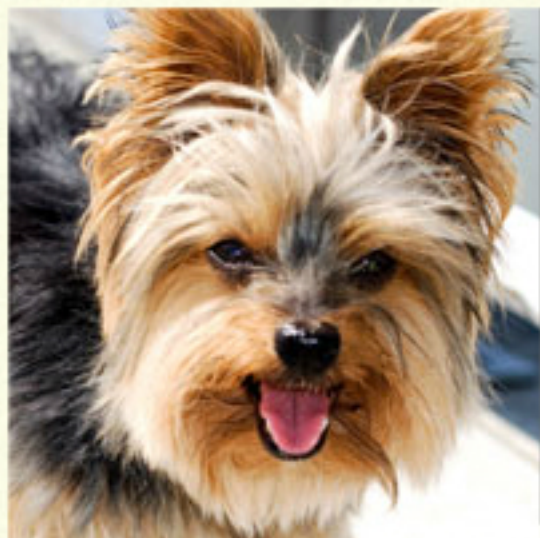


Lhasa Apso is a small canine breed originated from the Chinese region TIBET. Considered old, its origin dates back to the year

1500 .

His name comes from the capital Lhasa, its a friendly dog , he likes to go on walks outside.

He has got more famous when he got to England



Yorkshire

The Yorkshire is a small kind of dog .
He is a friendly dog and is a very good company .
He has a soft pelage

He is from England and he is one of the most favorite dogs in Brazil

When he is old he has a white pelage like old humans hair .

He is omnivorous and he cant eat candy



He is a small kind of dog who has 2 to 4 kg he has a white pelage . They live, on average, 13 to 15 years.

The average height adult dog Maltese is 25 to 35 cm .

The Maltese dog is very agitated, requiring physical activity. They do not like to be alone for long

They are great companion dogs



FONTE:

www.suapesquisa.com/cachorros/cao_maltas.htm

pt.wikipedia.org/wiki/Lhasa_apso

pt.wikipedia.org/wiki/Yorkshire_Terrier

pt.wikipedia.org/wiki/Labrador_retriever